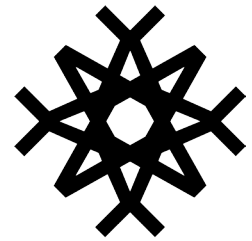
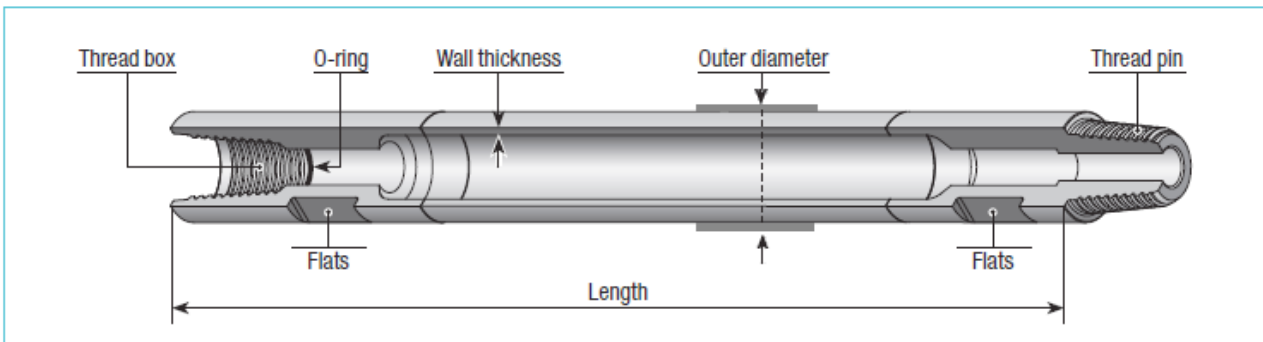
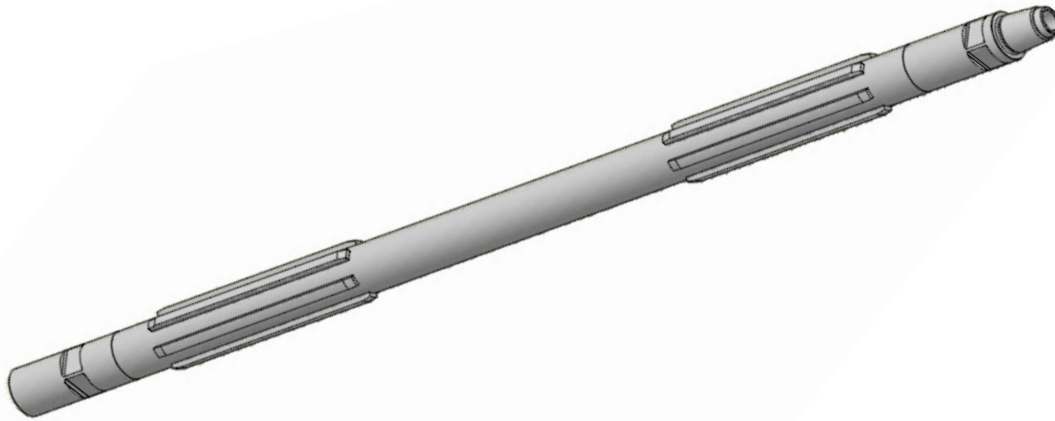


WATER-POWERED DRILLING

TECHNICAL SPECIFICATION: GUIDED DRILL RODS



Wassara



Wassara Guided Drill Rods are designed for extra straight drilling and maximum productivity optimal service life and easy to use. An O-ring is placed in the thread box to seal of any water leakage and to minimize pressure drop. Material choices, heat treatments and production methods are all state of the art.

Wassara Drill Rods 56 – 248 mm (2" - 9 ¾")

SAW welded

Mid-body: Hot rolled ST52

Tool joints (end pieces): Quenched and tempered 4140 or 4145 H modified. Nitrated.

Welded Guide ribs

Hardfaced with DUR600

WASSARA GUIDED DRILL RODS SELECTION GUIDE

Guiding diameter	Hammer	Rod diameter mm	Thread box / pin	Wall thickness	Flats (4-way)	Length	Weight	Part number
56 mm (2")	W50	48 (1 7/8")	NC13	12.5 mm	36x40	0.75 m	18 kg	1501033-56-750
60 mm (2 3/8")	W50	48 (1 7/8")	NC13	12,5 mm	36x40	0.75 m	18 kg	1501033-60-750
78 mm (3 1/8")	W70	63,5 (2 1/2")	W70	12,5 mm	50x50	0.75 m	28 kg	1501035-78-750
85 mm (3 3/8")	W70	63,5 (2 1/2")	W70	12,5 mm	50x50	0.75 m	28,5 kg	1501035-85-750
91mm (3 5/8")	W80	76 (3")	API 2 3/8" REG	12,5 mm	65x40	0.75 m	33,5 kg	1501037-91-750
98 mm (3 7/8")	W80	76 (3")	API 2 3/8" REG	12,5 mm	65x40	0.75 m	33,5 kg	1501037-98-750
111 mm (4 3/8")	W100	89 (3 1/2")	API 2 3/8" REG	12,5 mm	65x40	1,5 m	53 kg	1501039-111-1500
116 mm (4 1/2")	W100	89 (3 1/2")	API 2 3/8" REG	12,5 mm	65x40	1,5 m	54 kg	1501039-116-1500
123 mm (4 3/4")	W100	89 (3 1/2")	API 2 3/8" REG	12,5 mm	65x40	1,5 m	55 kg	1501039-123-1500
126 mm (5")	W120	102 (4")	API 3 1/2" REG	16 mm	80x50	1.5 m	62 kg	1501041-126-1500
136 mm (5 3/8")	W120	102 (4")	API 3 1/2" REG	16 mm	80x50	1.5 m	63 kg	1501041-136-1500
148 mm (5 3/4")	W120	102 (4")	API 3 1/2" REG	16 mm	80x50	1.5 m	65 kg	1501041-148-1500
160 mm (6 1/4")	W150	114 (4 1/2")	API 3 1/2" REG	20 mm	95x50	1.5 m	85 kg	1501043-160-1500
173 mm (6 3/4")	W150	114 (4 1/2")	API 3 1/2" REG	20 mm	95x50	1.5 m	86 kg	1501043-173-1500
185 mm (6 1/4")	W150	140 (5 1/2")	API 3 1/2" REG	20 mm	120x50	1.5 m	111 kg	1501043-185-1500
198 mm (6 1/4")	W150	140 (5 1/2")	API 3 1/2" REG	20 mm	120x50	1.5 m	116 kg	1501043-198-1500
210 mm (8 1/4")	W200	168 (6 5/8")	API 4 1/2" IF	20 mm	120x50	1.5 m	128 kg	1501045-210-1500
248 mm (9 3/4")	W200	194 (7 5/8")	API 4 1/2" IF	20 mm	160x50	1.5 m	228 kg	1501045-248-1500

